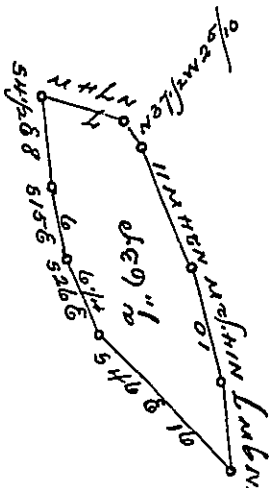


York County Shore



Lancaster County Shore

A Draught of Canadota Island, Situate in the River Susquehanna
 in Manor Township Lancaster County opposite Cabin Branch Island
 Containing One acre and sixty three perches Strict measure Surveyed
 in pursuance of a Warrant dated the 28th day of May A.D. 1812 granted
 to John Wisler and John Schock Junr.

To Jacob Spangler Esq
 Surveyor General

Per Jacob Hishman D. J.

IN TESTIMONY that the above is a copy of the original remaining on file in
 the Department of Internal Affairs of Pennsylvania, made
 conformably to an Act of Assembly approved the 16th day of
 February, 1833, I have hereunto set my Hand and caused
 the Seal of said Department to be affixed at Harrisburg,
 this first day of August, 1899

James W. Latta
 Secretary of Internal Affairs.